

MAPEX VISION SYSTEMS

INSIDE THIS ISSUE:

<i>Vision Systems V4</i>	1
<i>House News</i>	2
<i>Mapex Web Site</i>	2
<i>Data Collation</i>	2
<i>What's New Page</i>	3
<i>Bar Code Validation</i>	4
<i>"Dress Code"</i>	4
<i>"Show n Go"</i>	4

Mapex Inspection have sold a large number of advanced automated vision systems for tasks such as orientation, label placement inspection and so on.

We specialise in providing tailored solutions which embed the vision into an inspection, sorting and handling application whereby users can retrieve the necessary hardware/software settings via a menu structure.

V4 Vision Platform

The very latest development **V4** which brings high speed digital colour 2 x mega-pixel vision capability, enhanced inspection tools, colour processing at speed, high definition.

The new V4 platform is a scalable system based around a digital vision controller. The distinguishing features are the high speed capability, the flexibility of camera connections IE 'Mix and Match' Standard or High Resolution Mono/Colour camera's, and advanced inspection tools including OCR, Pattern recognition and measurement tools.

- For entry level systems the system is capable of running up to two digital mono or colour cameras at 512 x 480 pixels resolution.
- For advanced systems a single controller is capable of running up to four mono or colour camera with at various specifications at up to 1600 x 1200 pixels resolution.

Both systems run the same well proven intuitive software programming allowing an easy upgrade path from a simple single camera monochrome system to a full colour multiple camera system with a user friendly graphical interface that allows both live and reference images to be shown through the HMI to the operator at the same time.

Traditionally, colour inspection has been time limited due to the speed of image grabbing and processing. The use of triple processors and special image handling software provide colour inspection at realistic production line speeds.

V4 is approx twice as fast in operation as standard technologies.

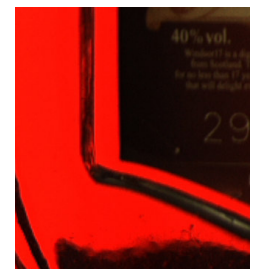
Optional partial image reading software provides a speed capability up to ten times faster.

The 2 x mega pixel camera view provides a viewing area approx equal to 8 traditional standard resolution cameras. This allows capture and processing of single images of packages rather than a series of zoned in images

The mega pixel and 2 mega pixel digital image processing allow single images to be acquired and interrogated in detail. Mapex Inspection have an advanced set of standard tools that allow us to undertake a wide variety of vision projects in any industry.



Verification



Placement

STOP PRESS



FROM HERE TO REALITY

Mapex Inspection have booked space to exhibit at

IBC 2007

2nd - 3rd October 2007

at

G-MEX, Manchester





HOUSE NEWS

Our company is expanding and to meet the increases in our system technology we are increasing our staff levels to meet the market conditions.

We are pleased to announce the following increases to our staff:

Liz McDonald



Liz has recently joined us as Administration Manager; Liz who is a graduate from Loughborough University is also fluent in both French and German an asset that contributes enormously to our current European activities.

This is of course
—Liz Hurley

Handling our day to day administration some of you will no doubt be speaking to Liz sooner or later.

COMMUNICATION



MAPEX WEB SITE

Our **Website** has recently undergone a “**Rebuild**” exercise; the new site brings you even more information relative to our company and our products.

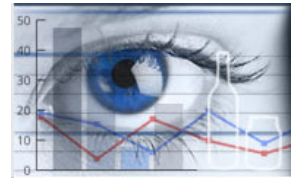
We shall continue the development of our information center not just for our products and their development but for inspection relative information such as government and EU regulation changes. For the example the guide line for safe working covering expectant or breast feeding mothers working with ionizing radiation issued by the UK's HSE IE. All gamma and X-ray derived level gauges

In addition we intend to bring you up to date NEWS stories through a monthly update on the Home and News pages of the Web site.

MANIFESTO will continue to be published on an annual basis and will be designed to provide you with more in depth information that can be downloaded for reference purposes.

All our **Sales Information** brochures have been re-formatted to allow fast access and down load from the Website in PDF format or you may contact us

DATA COLLATION



In response to overwhelming demand from our clients we have redesigned and expanded previously proven zone data collection package into a complete data collection and analysis software package.

The result being the new Mapex **VAULT** software is designed to provide a real time data collection from a production environment as feedback on actual zone or total line performance; this new package is designed to operate as;

- ✓ a stand alone facility
- ✓ an adjunct to a Mapex Inspection package
- ✓ in combination with a comprehensive line control system

The **VAULT** software can sit on the Mapex Inspection PCI platform, therefore making it available for export via a network connection; as an alternatively it can be loaded onto an independent PC adjacent to the production area.

The **VAULT** software can be tailored to individual applications to provide an accurate, reliable and concise summary of production data.

Data recording can be targeted to specific elements of a production process/function. For example, data can be collated on the comparative performance of labelled bottled according to the spotting star wheel pocket they originated from; providing valuable feedback and allowing targeted maintenance.

In conjunction with the **VAULT** summary page (as shown) the software can archive performance data to a CSV file. This file format can be interrogated by any 3rd party data manipulation software.

For further information please download the **VAULT** data sheet.

WHAT'S NEW

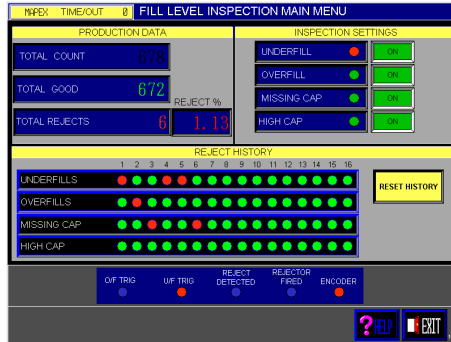
New Look HMI Screen Texts

Q1 2007 has seen changes to our **HMI screen** layouts and navigation, together with new functions such as embedded maintenance scheduling; expanded HELP; an on-line manual and photographs

The new display has a range of colour coded back grounds that show the user at which level and area they are in within the overall interface.

In addition the latest hardware allows a screen and text clarity that has no been available until now.

The Mapex HMI touch screens are easily accessed with rapid direct movements between areas without fixed path menus.



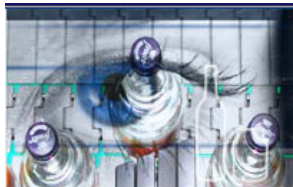
Camera Position Recovery

Yet another first from **Mapex Inspection**, in tandem with V4, comes the development the **Camera Position Recovery** package.

The package which is designed for complex vision systems is used for the testing and calibration hardware / software and thus allows users to confirm correct alignment of cameras / lights and be used at start of run to confirm correct position for inspection; or as a recovery tool following an accidental misalignment of cameras.

SEG Laning Systems - for the Glass Industry

We have recently successfully installed a second unit automatic **Laning** system for the world's largest glass container manufacturer.



The units have been designed to divide the production flow into two for inspection and handling purposes. The **Mapex SEG** lane dividers are required to work 24/7 and in one of the harshest operating environments in the packaging industry.

The SEG unit has been designed and developed to handle either filled or empty bottles and of course a wide variety of bottle shapes.

Flagging Label for Canners

Our **Flagging / Trailing** label detection system is another area that is currently generating significant interest



Mapex Inspection has had for sometime a simple yet highly effective detection system and rejection system designed specifically for the food canner.

The product comes as an off the shelf package that includes a high speed pneumatic rejecter for the removal of single cans or "label strings" of cans from the production flow.

The standard package can be employed as a stand-alone system or a module for a more complex inspection system.

Mapex Benefits for The Packer

- Ⓜ Advanced Vision Technology
- Ⓜ Custom Solutions
- Ⓜ Daisy Chain
- Ⓜ Extensive References
- Ⓜ Flexibility
- Ⓜ Laser Fill Level
- Ⓜ Low Cost of Ownership
- Ⓜ Interpersonal Relationships
- Ⓜ Modularity
- Ⓜ Operational Reliability
- Ⓜ Project Specific
- Ⓜ Proven Technology
- Ⓜ Redeployable Technology
- Ⓜ Reject Handling
- Ⓜ Robust Construction
- Ⓜ Safety
- Ⓜ Simple
- Ⓜ Sorting
- Ⓜ Standard Packages
- Ⓜ State of the Art
- Ⓜ System Approach
- Ⓜ Tailored Engineered
- Ⓜ Technology Integrator
- Ⓜ Training
- Ⓜ User Friendly

A range of new format data sheets are now available for download via Our Website

BAR CODE VALIDATION



In today's environment of product identity more emphasis is placed upon the Universal Product Code; the food distribution and retailing would not function as efficiently without it. The current vehicle has a major significance in this world; the automated handling and distribution systems do not perform without them.

Mapex Inspection has designed, manufactured, installed and commissioned a raft of bar code orientated packages that cover from the most fundamental "Show and Go" system to the sophisticated Net system that monitors all the bar codes introduced in a production run – label, carton or shrink wrap pack, and pallet. This Net combination can include bar code verification systems, ID matrix readers and/or RFID where these are relevant and economic.

Our combination systems allow for sensor or camera based label position inspection to be packaged with bar code validation systems and will include an automatic rejection devices if required.

“Dress Code”

We have recently designed, built and successfully commissioned a Bar Code validation network for a major international beverage company that through bar code scanning identifies errors in container dress and secondary packaging.

The system aimed initially at the Spirit market where exact retail product presentation has the highest consideration; the system has the flexibility to be adapted to any pack specification where multiple ID code requirements are necessary.

The recent installation which is designed to cover label dress, presentation cartons and shipping cases is configured thus:

- Front body label with an ID bar code printed on the reverse side.
- Back body label where the retail UPC code is used.
- Presentation gift carton during the erection stage—UPC code.
- Presentation carton at the collation stage for shipper packing –UPC code.
- Shipping case—UPC code.

In all the system incorporates 8 scanners reading 4 different Bar Codes; the result 100 % correct dress code.

The system combinations are limitless; we would be delighted to discuss your situation.

“Show-n-Go”

Simple **Bar Code Validation** systems are becoming more and more a necessity in every aspect of packaging for the retail trade. Mistakes in labelling are made and whilst many avoidable if they find their way inadvertently into the distribution chain then “black marks” and heavy financial penalties usually ensue.

Mapex Inspection offers an off the shelf package that is designed to slip unobtrusively on the production line and is designed, after a simple teach-in, to police the passing packages until is taught to change. Every package is checked those with unreadable or wrong codes are identified an alarm is raised. The alarms package includes an E-stop signals and an audio visual beacon display.

For further information on any of the above please download the **BCV** data sheet.

If you would like further information on any of the items listed above or wish to be included on our news letter circulation, Email us.

M & A Packaging Services Ltd.
Spring Lane North,
Enigma Business Park,
Malvern,
WR14 1BU.
UNITED KINGDOM

Tel: +44 (0) 1684 560099

Email:
info@mapexinspection.co.uk

Visit our Web Site:
www.mapexinspection.co.uk