



Mapex
INSPECTION

MANIFESTO

THE NEWS LETTER OF MAPEX INSPECTION

Autumn 2004

MAPEX VIS SYSTEMS - 100 N.O.

INSIDE THIS ISSUE:

<i>Mapex 100 no</i>	1
<i>Record Sales for 2004</i>	1
<i>911 Revisited</i>	2
NEW <i>Camera Housing</i>	2
<i>Communications</i>	3
<i>Multi-segment Rejection</i>	3
<i>Chivas invest in people</i>	4
<i>Hendrick Motor Sport</i>	4

STOP PRESS

Visit our web site:
www.mapexinspection.co.uk

“Terror suspects facing plot charges.....”

Eight men have arrived at court under a heavy police escort to face charges of plotting terrorist outrages in Britain and the United States.”

Daily Mail 18.08.04

See Page 2 for more.....

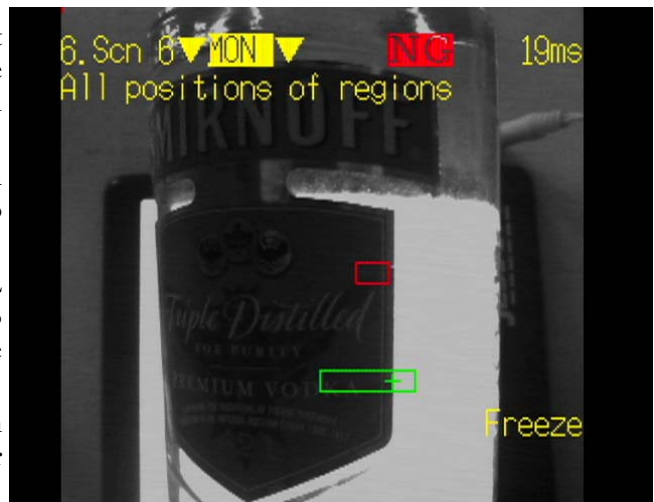
The **Mapex Inspection** vision system **-VIS-** has recently become the most successful vision inspection in our sector of the packaging industry. The number of vision systems that have been successfully installed and commissioned has passed the magical century figure.

The majority of systems that have been installed to date have been associated with the presence and position of labels. The simple position requirement has moved to position relative to other labels, the application of PSL (Pressure Sensitive Labels) to check for air bubbles and the confirmation of correct caps. In combination with such devices we offer **Labeller Monitoring** systems to

provide valuable information to the packer related to the performance of the individual label stations on his labeller. This positional information is invaluable to the maintenance engineers in set up or problem solving.

Closure application for such checks as cocked cap, torn skirts, thread profile and correct artwork have all fallen into the “Can do” abilities of the VIS systems. Code presence, bar code, label dress verification, the presentation of tamper evident sleeves, tax strip presentation are all within the capability of the current **Mapex VIS system**.

If you would like to discuss the possibilities of this system with your product ring or Email us.



Label presence and relative position within the label panel

2004 RECORD SALES

M & A Packaging Services the parent company of **Mapex Inspection** has recorded record sales for the second successive year.

The leading product group is of course the Mapex Inspection range of on-line inspection devices. Much of the improved sales is attributed to the Vision inspection range (see above).

The in-house developed Laser Fill Level Control continues to lead the field when checking fill levels within glass and “plastic containers. The laser system, with no adjustment other than height, has the ability to check the for the presence of product behind most paper labels and pre-sleeved containers.

911 REVISITED?

In the aftermath of the attacks in New York and Washington on September 11th 2001, the Government has taken a number of measures to strengthen the UK's defences against terrorist attack. The security of radioactive sources is one area that is currently receiving priority attention. A list of all licensed users of radiation has been provided by The Environment Agency and all users can expect a visit from the Counter Terrorism Security Advisor from their police force area with a view to ensuring the security of their operation.

Fill Height Detectors that employ a gamma isotope (generally Americium²⁴¹) fall into the priority category; therefore all licensed users should have had a visit from their Counter Terrorism Security Advisor, or can expect such a visit in the near future. Any new license applications will attract the attention of your local police force. The security of radioactive isotopes should be integrated into the users risk assessment with the other 28 considerations detailed in the Approved Code Of Practice guidance notes for Regulation 7 of the Ionising Radiations Regulations 1999.



The **MAPEX Inspection Laser** fill level control system is a Class 1 laser and has no special use regulations or requirements. The laser is suitable for glass, and all forms of plastic containers. In addition it is suitable for the products that have a high alcohol content that would generally need a radioactive source.

The national picture is coordinated by the police National Counter Terrorism Security Office (NaCTSO) which can be contacted at nactso@bopenworld.com

NEW VIS CAMERA HOUSING FOR MULTI-PURPOSE USE



With an ever widening field of vision applications we have recently completed a design exercise to up-grade our range of camera enclosures to ensure their conformity to the highest standards.

The results of this exercise being that we have achieved a complete protection for our cameras against the harshest elements that our industry throws out.

This high level of protection does not in any way detract from the accessibility of the camera hardware stored within.

This design is made possible by the low operating temperature of the camera; this feature does not create condensation within the 304 grade stainless steel housing during long term continuous use.

Another first from **Mapex Inspection**.

NEW MAPEX SITE HITS THE WEB

We are in the process of redesigning our Web site, in doing so we hope to establish an information center not just for our products and their development but for inspection relative information such as government and EU regulation changes.

For the example the guide line for safe working covering expectant or breast feeding mothers working with ionising radiation issued by our

HSE (Copies can be obtained through the HSE Web site). We intend to publish reference to such information on our new site from September '04 onwards. www.mapexinspection.co.uk



Mapex Inspection act as a *Specialist Integrator* for Omron Electronics within the packaging sector; specifically with regard to vision applications.

During the third quarter of 2004 Omron have started to introduce new vision technologies into the marketplace. **Mapex Inspection** are amongst the first European companies to apply these tools. The release to market of new Omron products will continue into

2005 and beyond; and **Mapex Inspection** are committed to the application of advanced tools to resolve real life, production line issues.

Using the well proven **Mapex Inspection developed VIS platform**, we are able to tackle a huge range of vision applications from a diversity of market sectors acting as turnkey project suppliers, or as specialist inspection technol-

COMMUNICATIONS



We aim, with each issue of Manifesto, to provide our readers with jargon free information on the various standard features of our communications package and what it can provide for your benefit.

This time around we wish to pass on our **Mapex Inspection** no-nonsense guide to **production reporting**.....

Mapex Inspection equipment now offers the facility of production line **data collation** without Operator intervention. **Mapex Inspection** modules are designed to be industrially robust, but have not traditionally offered the facility to **archive production data**. The development of a "gateway" between the inspection module and a PC allows all aspects of production line data to be written into a Microsoft Excel spreadsheet. The **networking** of Mapex Inspection modules on a line; or within a factory, further expands the nature of the data that can be collated.

Once data is available within the universally popular Microsoft Office environment, it is possible to personalise reporting so that individuals can receive automated tailored documents detailing actual line performance.

MAPEX HANDLING SYSTEMS -SEG-

Mapex Handling Systems have for some years had much success in the safe diversion of unstable containers in the bottling industry.

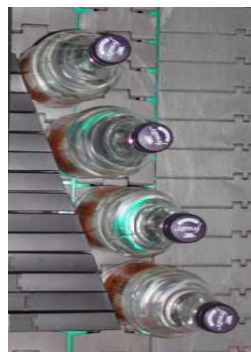
The **Mapex -SEG-** diversion unit has been accepted as an ideal tool to move those tall unstable containers from one track to another without trauma. The system is offered as a rejecter that can be employed as a rejecter removing reject contains from the flow or as a diversion unit that will perform equally as well in a sampling routine or as a specific laning diverter..

The **Mapex -SEG-** in common with the other elements in the handling range are custom designed to meet the clients' requirements so this bespoke system provides the best fit solution to those difficult handling routines with unstable containers as well difficult to handle lightweight packages.

In addition to working along with the entire Mapex Inspection range the **-SEG-** can be supplied as an intelligent laning system with a variable lane count facility if required.



As a Rejecter



As part of a laning or sampling system

Radiactivity

Remember...

The MAPEX FLO laser based system negates the need for

RADIATION



INVESTS FOR ITS PEOPLE

The Paisley Distiller, part of the influential Pernod Richart group, is not the first to see the benefits of training its people and they will certainly not be the last. However they are the first company in the Scotch Whisky Industry to invest in a 2020 HINDSIGHT system for their operations in Paisley. The system has been justified primarily to train their operators on ideal and safe working practice through out the production plant; although there is an expectation that this tool will be used in other areas of their operation.

CHIVAS REGAL have chosen the laptop version of the 2020 HINDSIGHT system, this version of the proven digital video capture and analysis system is the same as the H Box version but with a five hour recording time of instead of the normal ten hours.

20/20 HINDSIGHT

Applies to both packaging and pit-stops

Hendrick Motorsports, 5 Time Winston Cup Champion, uses the 2020 Hindsight video system to fine-tune the training of its pit-crew technicians.

The high-speed video system that takes pictures of events at up to 0.00001 of a second shutter speed and records up to 60 pictures/second, is as effective in troubleshooting packaging lines as it is for optimizing pit-stop operations for racing cars.

If you would like further information on any of the items listed above or wish to be included on our news letter circulation, *Email us.*

M & A Packaging Services Ltd.
Spring Lane North,
Enigma Business Park,
Malvern,
WR14 1BU.
UNITED KINGDOM

Tel: +44 (0) 1684 560099
Email:
info@mapexinspection.co.uk

Visit our Web Site:
www.mapexinspection.co.uk



Fast Efficient Pit Stop thanks to 20/20 HINDSIGHT

In this example, a technician practices removing a wheel nut. HMS has learned how to perfect this procedure to shave tenths of a second off of their stops. The technician actually removes the wrench while the nut is still on the lug. With proper technique, momentum will propel the nut off while the wrench is moved to the next nut.

Photos © HMS.