



PRODUCT INFORMATION

Fill Level Inspection - Valve Monitoring -FVM-

Mapex Inspection provide a range of technologies for *Inspection, Sorting & Handling* on packaging lines. Included in the range are variety of fill level inspectors – these devices use various forms of technology to perform fill level inspection on the production line. Any of these technologies can be complimented with a **Filler Valve Monitoring** package.

The **FVM** simply provides allocation of fill level inspection results to individual valves for use as a management tool. A 0.6% overall reject rate may seem acceptable until it is expressed as a 100% failure on one valve of a 165 head filler.

The **FVM** is designed to provide a performance matrix for underfill and/or overfill. Best and Worst performing valves can be automatically identified, trend analysis can be performed and efficiency relative to user set targets is calculated



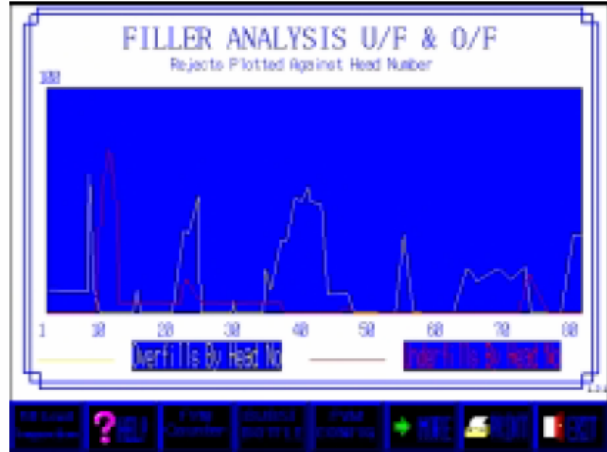
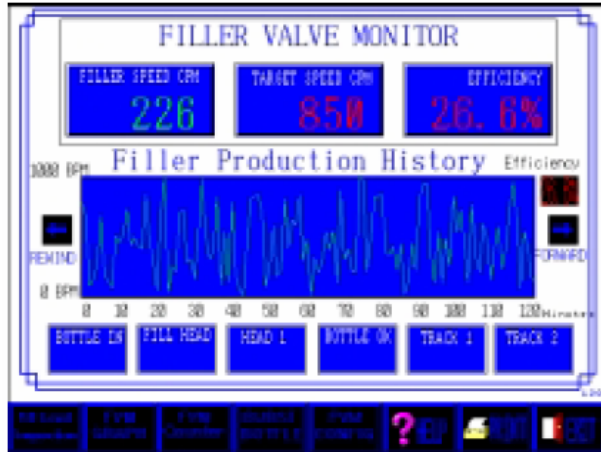
The **FVM** provides real time performance related data via a colour TFT touchscreen interface. User navigation around the touchscreen is simply by selection of the on screen feature required. Five levels of password protection (16 characters maximum) are provided to prevent erroneous changes to settings etc. Permanent switches and/or key switches can also be provided for functions, dual languages can be accommodated in this way.

Performance data presented on a 1 hour, 8 hour and 24 hours basis and is also available via an **Ethernet** link; or can be made available via a memory card (*.csv format) which will interface with most common spreadsheet programmes to allow generation of custom report formats.

The touchscreen HMI is used to display real time filler and valve performance data.

Filler Performance :

Performance By Valve :



Specification

Performance : Derived from Inspection Technique Being Used

Standard

- Underfill Inspection
- 256 Colour
- SVGA TFT Touchscreen
- Best Valve Identification
- Worst Valve Identification
- Graphical Representation
- Password Protection (5 levels)
- Stainless Steel Construction
- Elevating Mechanism
- Digital Height Gauge (mm)
- Conveyor Mounting
- Audio / Visual Alarm
- Self Diagnostics
- HELP facility

Optional

- Gamma or Laser
- Overfill Inspection
- Fob Detection
- Variable Speed Operation
- Missing Closure Detection
- Filler Tube Detection
- Burst Bottle Detection
- Sampling
- Ethernet
- Memory Card (CSV format)
- Export Data to Spreadsheet

Rejection Options



* data shown exported to Microsoft Excel ©

The **Mapex Inspection** equipment range is designed for **maximum flexibility**. All equipment combines the principles of user friendliness, simplicity and robust build. Furthermore, equipment is **modular** so that it can be configured to suit specific user needs now or in the future !

An extensive reference list is available for Mapex Inspection Equipment.



Mapex Inspection

M&A Packaging Services Ltd .

Spring Lane North . Enigma Business Park . Malvern . WR14 1BU . UK

Tel: +44 (0) 1684 560099 . Fax: +44 (0) 1684 560095 .

email: info@mapexinspection.co.uk www.mapexinspection.co.uk